

# East® MMX™ Aluminum Platform Trailer



*The ideal balance of strength, weight and maximum concentrated load rating.*

*Rated to handle loads up to 72,000 lbs. concentrated in 4 feet.*





# MMX™. Rated to handle 72,000 lbs. concentrated in 4 feet, and up to 145,000 lbs. distributed (multi-axle).

You have a profit center in your East MMX™ (patent pending) aluminum flatbed trailer. It can make you a lot of money. For three simple reasons.

First, you get optimal payload versatility. The MMX is rated to handle loads **up to 72,000 lbs.** concentrated in 4 feet on a 48-ft. spread-axle trailer. Match that with its light weight, and you can now haul a wider variety of loads. Haul more, make more.

Second, you lower your cost of operation. The MMX is durable and strong by design (patent pending), with main beams and structural cross-members made of 6061-T6 aluminum alloy that is just as strong as steel. And our limited five-year warranty backs the heavy-duty strength in every aluminum flatbed we make for you.

Third, East trailers have a reputation for quality that brings a higher resale value.

In other words, our trailers are simply built to last and perform, year after year. An East MMX is one of the most cost-effective trailers you can buy.

## Maximum payload.

When margins are slim, you must look for ways to maximize payload in order to increase profitability. That's why East designed the MMX to have the highest concentrated load rating available in a lightweight aluminum flatbed trailer. Rated to handle loads **up to 72,000 lbs.** concentrated in 4 feet on a 48-ft. spread-axle trailer (available in lengths up to 53 feet), the East MMX platform is the lightest and strongest aluminum platform trailer on the road today.

## Maximum corrosion resistance.

Aluminum is the best guard against corrosive elements and chemicals. From front to back, East offers more anticorrosive options than any other flatbed.

## Maximum strength.

The East MMX's patent-pending design doesn't skimp on high-quality aluminum in its composition. For example, the main beams and structural cross-members utilize 6061-T6 aluminum, offering all of the durability of high-tensile-strength steel at less than half the weight.

## Maximum versatility.

The MMX combination of light weight, strength and high load ratings gives you versatile and flexible load options, a real asset in the battle for profitability.



## Aluminum winch system lighter and stronger than corrosion-prone steel.

Exceeding NACSS requirements, the patent-pending aluminum winch weighs about 4 lbs. less than traditional steel winches, yet pull-tested stronger. Winches and winch clips are interchangeable on either side of the trailer, so torque can be applied on both sides to help stabilize uneven loads. Both are available in a low-profile version for use in tight clearance areas.

## Wired for protection.

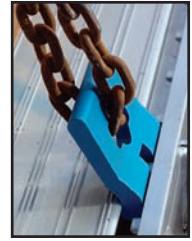
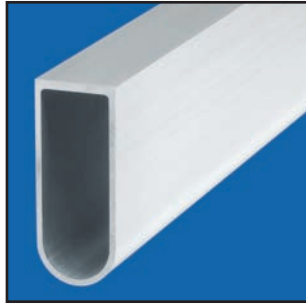
Sealed lamps and return ground wiring are standard features.



## MMX main beam minimizes flex, ideal for multi-axle applications.

The straight-bottom dual-T aluminum main beam more evenly distributes load weight to all axles. It maintains a consistent ground clearance when loaded – with plenty of ground clearance for lift axles. The design balances load stresses more evenly – for longer life, less maintenance.

**Exclusive cross-members designed for extra durability.** The innovative tubular design of the cross-member, exclusive to East flatbeds, distributes stresses more uniformly and is more twist-resistant in turn situations than the conventional "C" beam found on other flatbeds. This even distribution of stress over a greater area, and the closed end to eliminate ice and snow buildup, increase the durability and service life of an East flatbed.



**Exclusive Securetight™ cargo controls.**

Only East gives you side-rail extrusions specially designed for adjustable chain tie-downs and a unique winch strap capture system (that utilizes winch clips designed by East). The easy-to-use tie-downs and winch clips are interchangeable on either side of the trailer. Torque can then be applied on both sides to help stabilize uneven loads. The movable tie-downs across the top of the side rail provide positive locking every eight inches. A second track on the inside edge, adjacent to the main rails, is also available.

There's also an added safety feature. Straps go inside, not over top of the rub rail. This protects the strap from chafing against the winch hook (improving strap life), and from shearing or cutting should the trailer be involved in a mishap.

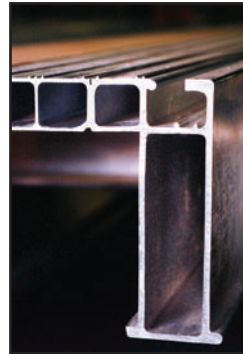
**Aerodynamic underneath.**

Hollow-core floor planks are fully enclosed, as are the patented tubular cross-members, and no wind-catching rail braces are required. Add this to the sleek and smooth transition of the MMX's 12 1/2"-deep neck and you get less wind resistance...and more fuel efficiency.



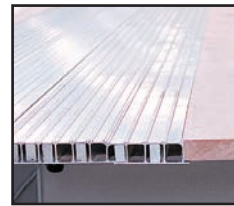
**Wiring protected from the elements.**

East's patented hollow-core side-rail design, called Securelight™, provides a conduit for wiring to be fully enclosed. This solves one of the biggest problems incurred by flatbed trailers, particularly in winter – snow, ice and moisture causing shorts in the lighting system. This also allows for recessed versus surface-mounted lights, and provides additional area around pocket spools and rub rails to secure chains or straps.



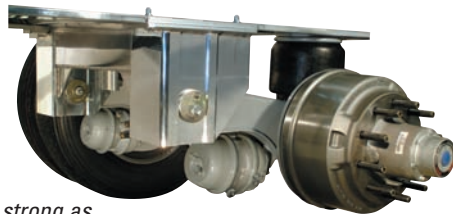
**Unique flooring design carries the load.**

Beneath the skid-resistant floor of an East MMX is an extra base and support beams 1 inch apart for greater strength in supporting the load. Full-length, continuous welds join the floor planks to the main beams for greater strength.



Or specify the East Concentrated Load Package (CLP) with additional aluminum bars inserted into the floor plank voids (pictured) in an 8-foot section to handle extra-concentrated loads like steel coils. The CLP includes extra frame and floor cross-members for 12" centers (10" spacing).

**Aluminum suspension hanger option.** East Lite-Ride™ aluminum suspension hangers offer maximum corrosion resistance and are lighter than steel. Yet this rust-free patent-pending option tested as strong as current steel hanger designs. (Available on limited suspension models.)



**Wheel-end assembly warranted for 5 years.**

Standard East Elite™ wheel-end parts are warranted for five years or 500,000 miles, eliminating the usual practice of replacing the seals during every brake job. The assembly is filled with synthetic oil, which resists high-temperature breakdown.



**Added protection in the back.**

The rear panel is fully sealed for water resistance. Patented recessed grooves protect federal conspicuity tape. Rubber dock blocks and a heavy-wall bumper provide added protection.

## ***East 5-year limited warranty.***

An East trailer starts with materials that exceed most industry standards. Our goal is to build to the highest level of craftsmanship. When we put the East name on a trailer, we stand behind it. We always have...and we put that promise **in writing** so you can be assured of prompt action if you need it.

We want our customers to be as satisfied with our service as they are with our trailers. A nationwide network of East distributors is qualified and trained to live up to high standards for service, repair and parts availability.

## ***Options.***

Since East MMX aluminum platform trailers are custom manufactured, almost any size or option is available. Some common options include:

- Aluminum disc wheels
- Aluminum tool and side-kit boxes
- Bulkheads, fixed and removable
- 4-spring suspensions, fixed and sliding
- Tire carrier

### **East Manufacturing Corp.**

1871 St. Rt. 44, P.O. Box 277

Randolph, OH 44265

(330) 325-9921 Fax: (330) 325-7851

888-405-3278 [www.eastmfg.com](http://www.eastmfg.com)



Specifications subject to change without notice.  
Some items appearing may be optional.

10M/02-06

## ***The East platform trailer line.***



*Drop platform*



*Aluminum B-trains*



*Built-in traveling unloading crane*



*East BST™*

**Distributed by:**